



DRIVE VIDEO RECORDER

WITH 2.5" TFT LCD SCREEN

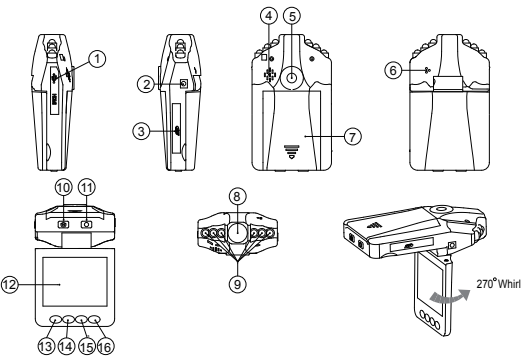
Instruction Manual

Thank you for purchasing Powertrain Portable DVR.
In order to help you operate the unit correctly, please
read this instruction carefully before using.

Part No: DVRVGAC

.1.

Product Picture and Function



- 1. USB Socket
- 2. AV Out
- 3. SD/MMC Card Slot
- 4. Speaker
- 5. Mount hole
- 6. Microphone
- 7. Battery cover
- 8. Lens
- 9. IR Led
- 10. ON/OFF Power Switch Charging(Red)indicator
- 11. REC/SNAP Working(Blue)indicator
- 12. 2.4inch LCD
- 13. Menu Button
- 14. Down Button
- 15. Up Button
- 16. Mode Button

Included Accessories

- Manual
- Mount
- USB Cable
- Car Charger (Suitable for 12V and 24V vehicles)

Operation

Two Power options:

- A) Built-in Li-ion battery
DVR can be activated after it has been placed in the vehicle and by pressing the Power Switch (10) for 3 seconds and turn off by pressing it again.
Charging: connect with USB cable or car charger. The indicator will display red while charging and go out when it is fully charged
- B) Connect with Car Charger
DVR will record automatically when the car starts, turn off and save the last file when the car stops.

Recording

The DVR will enter into defaulted recording mode when it is turned on, the work indicator blinks and indicates the unit is recording. The recorded file is saved on the SD/MMC Card. To stop recording, press the Recording Button (11), or the unit will stop recording when the car stops.

Camera mode

Turn on the DVR and press Mode Button (16) to enter into Camera mode. To take photo press the SNAP Button (11).

Preview and Delete

Turn on the DVR and press the Mode Button (16) twice to enter into Preview Mode, Press Up (15) or Down (14) to select the file for preview. If it is video file you can play or stop by pressing REC Button. If you want to delete the file, press the Menu Button (13) and enter into delete mode, then select Single or All and Select file by using the UP/Down Button and REC Button to delete, then press Rec Button again to confirm the delete.
Also you can select Thumbnail mode and volume (from 1 to 8) under the Preview Mode.

Setting the functions

Turn on the DVR and press the Menu Button under Video mode or Camera mode to enter into the setting interface. Confirm by pressing the REC Button and select by Up/ Down buttons for the following settings. Press Menu Button again to exit after finishing.

.2.

A. Video mode

- 1. Size: Select [1280x720 /720x480/640x480pixels]
- 2. Time Stamp: Select Off/Date only/Date & Time
- 3. Motion Detect: Select On/Off

Note: When the Motion detect function is selected the unit will record automatically if there is object movement, and stop recording if no movement.

- 4. Audio Record: Select On/Off
- 5. Recording time: select [2/5/15] minute to decide how many time will be storage per one section.

B. Camera mode

Size 1.3MA/GA

C. Setting Mode

Whether under Video mode or capture mode, press Menu Button twice to enter into Setup interface.

- 1. Format: Select it if you want to format the SD card.
- 2. Language: Select [English/Chinese/Japanese/Russian]
- 3. System Reset: Select [Cancel or Execute system] reset.
- 4. Light Frequency: set [50/60Hz].
- 5. Date Input: Set correct recording Date and time by Rec button and Up/Down Button.
- 6. TV Output

USB Mode

Connect DVR to a computer by a USB cable, [My computer] will show removable disk, the file is stored at Removable Disk/DCIM/100DSCIM, The file on the DVR can be downloaded to the computer.

Note:

- 1) Please insert the SD/MMC card before recording.
- 2) This DVR records in cycle if you choose 2/5/15 minutes as storage time. When the storage medium is full, it will record from the beginning again and erase the previously recorded material automatically. The unit will have 3 second pause time, to name the file, in the 3 seconds no recording will take place.
- 3) Because the DVR is DC5V input, please use the included car charger. The charger is suitable for 12v and 24v vehicles

Technical Specifications

- 1) Recording resolution: 1280x720 pixels
- 2) Video format: AVI
- 3) Repeat storage by section: 2/5/15 minutes
- 4) Power source: Built-in rechargeable battery or 12V/24V Car Charger
- 5) Supports SD/MMC card(From 1GB up to 32GB)
- 6) Microphone: can record sound
- 7) 2.4inchLCD:270°

Due to the process of continuous improvement, the product and procedures in this manual are subject to change without notice.

.3.